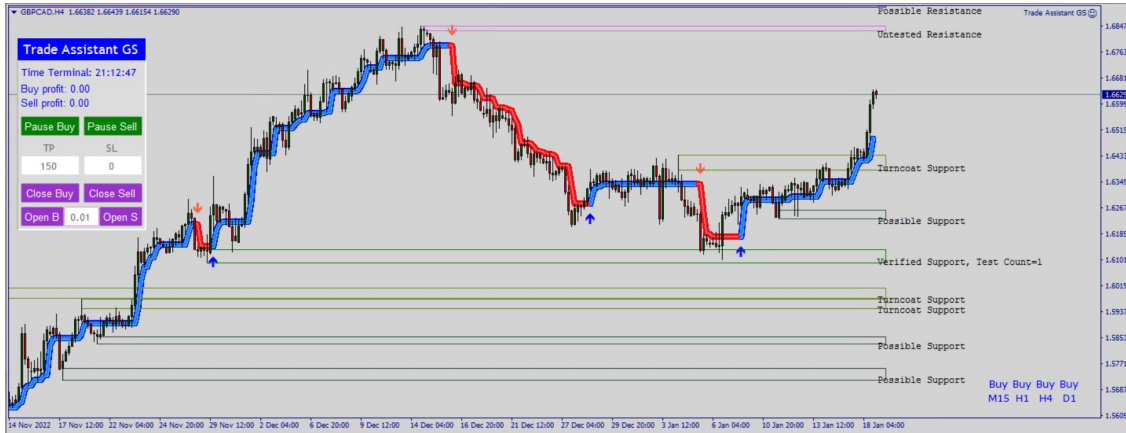


## MANUAL FOR TRADE ASSISTANT GS

The Trade Assistant is designed for the manual trader who needs assistance to manage orders. First analyze the trend by using a good indicator like Gold Stuff. Once you have established the main trend, start your orders with the Trade Assistant and use the “buy” and “sell” buttons on panel of the chart to open orders. The trader can choose to build a grid with or without a multiplier, or just use a single trade according to the different options in the setting.



Follow these steps to set up your Trade Assistant:

1. Use a good indicator like Gold Stuff to detect the main trend. In the above chart, it is clearly up

## 2. PANEL PARAMETERS

Expert - Trade Assistant GS

Variable	Value
--- Basic parameters ---	
Support manual orders	true
Grid	true
Max Orders	10
Order Comment	Trade Assistant GS
Lot Multiplier	1.5
Max Lot	500.0
TP	150
SL (0 - not use)	0
Trail Start, points (0 - not use)	0
Trail Step, points	1000
Max spread (0 - not use)	0
DD Reduction Algorithm	true
Number order for DD Reduction Algorithm	6
Percent profit for DD Reduction Algorithm	1
Draw on-off	true
Font Result	Verdana
Font size Result	14
Font color Result	<input type="checkbox"/> White
Background color Result	<input checked="" type="checkbox"/> Green
Pause between orders (min. 0 - not use)	0
Magic EA	17012023
--- Distance settings ---	
Fix distance	200
Order dinamic distance	6
Dynamic distance start	200
Distance multiplier	1.2
--- Panel Parametrs ---	
X1	30
Y1	10
Info panel background color	<input type="checkbox"/> Gainsboro

**Support Manual Orders:** True or False (keep it True)

**Grid:** If you want to add another position if the trade goes negative after X amount of pips then make Grid True, if you want only 1 order make Grid False

**Max Orders:** If you use more than one order then set max orders that you will allow

**Order Comment:** Change it to the name of your choice

**Lot Multiplier:** If you want to use martingale strategy then set multiplier

**Max Lot:** If you want to restrict the system to a maximum lot size then set max lot to a number of your choice. Remember that martingale can increase lost sizes quickly. If you set max lot size for example at 1.0 then if the price keeps on going against the initial order and reaches 1.0, all the following orders will repeat lot size 1.0 as this is the max lot.

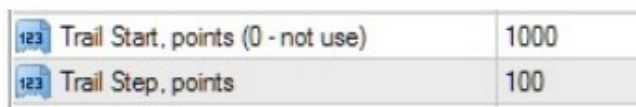
**TP:** This is your take profit in points, for instance 150 will be 150 points but 15 pips

**SL:** This is your Stop Loss in points from the start of the first order. 1000 will be 1000 points or 100 pips

**Trail Start points (0 - not use):**

**Trail Step points (0 – not use):**

Trailing stops only move if the price moves favourably. Once it moves to lock in a profit, it does not move back in the other direction. This tool is very useful when price moves strongly in your favour and you want to lock in your profits before the price falls back.



Trail Start, points (0 - not use)	1000
Trail Step, points	100

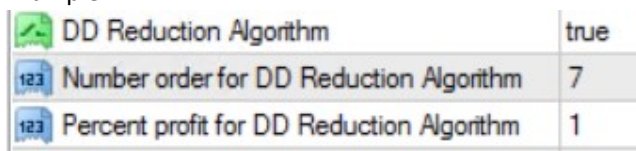
In the above screen shot the trailing will start at 100 pips (1000 points) in the money and will then move every 10 pips (100 points) as market goes in your favor. So if the trade is 110 pips in the money the trailing will already have locked in 10 pips. The trailing will follow in 10 pip **steps** until the price reverses and hits the trailing stop and close the trade in profit.

**Max spread (0 – not use):** If you set a max spread in points like 20, then EA will not enter a trade if spread is above 20 points or 2 pips.

**DD Reduction Algorithm: True/False**

Herewith an explanation of the technique:

Example:



DD Reduction Algorithm	true
Number order for DD Reduction Algorithm	7
Percent profit for DD Reduction Algorithm	1

If the first buy position at 0.01 lots went negative and the martingale grid has reached the 7th position of say 0.17, it will wait for the market to retrace until the 7th position goes in the money for the same amount as the 1st position is negative. The EA will then close both the 1st and 7th position simultaneously and therefore cancelled the loss plus 1% (so if order 1 was closed at a loss of -\$100, order 7 will close at a profit of 1% bigger than the loss which is \$101), leaving the rest of the trades open to either hit TP or if the market reaches the 7th trade again it will repeat the same action. This strategy is to lower the draw down while the EA is waiting for the market to retrace and hit TP of the whole basket.

**Draw on/off:** True/False

This function will draw the profit on the chart so make it True

**Font Result:** (This is the name of the font)

**Font size Result:** (this is the size of the font)

**Font color Result:** (font color)

**Background color Result:** (color of background)

**Pause between orders (min 0 – not use)**

If you want the EA to pause a certain amount of minutes between orders then set amount of minutes

**Magic EA:** Magic number of EA so that you can identify the specific system's trades.

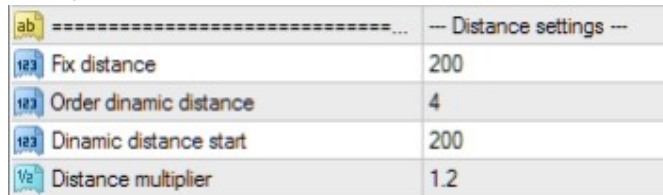
**DISTANCE SETTINGS:**

**Fix distance:**

Set the distance between orders in points like 200 is 20 pips

**The following settings will be explained in an example:**

**Example:**



--- Distance settings ---	
Fix distance	200
Order dinamic distance	4
Dinamic distance start	200
Distance multiplier	1.2

**Fix distance:** The distance between first order until x amount of orders. This value sets a fixed Distance (gap) between orders for the entire Series

**Order dynamic distance:** From which order will the dynamic distance be applied in above case it will be the 4th order This value sets the order number of Series where Dynamic Distance will begin.

**Dynamic distance start:** The starting value for the dynamic distance This value sets the distance between First Order and current market price, where the Dynamic Distance will begin.

**Distance multiplier:** The dynamic distance multiplier This value sets the multiplication factor for increasing the Distance (gap) between orders of a Series Example: Dynamic distance starts after that x amount of order, for example: Fixed distance 100. Order dynamic distance 4. Dynamic distance start 200. Distance multiplier 1.2 This means the distance between your 1st til 3th positions will be 10 pips. Starting from 4th position onward, the distance will be 20 pips before the ea opens a new order (with multiplier 1.2 means 20 x 1.2 hence 24 pips then next would be 28.8 pips)

**Panel Parameters:**

This will change the parameters on the panel (self explaining)

**PLEASE REMEMBER THE SETTINGS ON THE PANEL ON THE CHART WILL OVERRIDE THE SETTINGS INSIDE THE EA IF IT IS NOT THE SAME!**

For example if your starting lot is 0.01 inside the EA but on the panel it is 0.1, then when you click on Open Buy, the EA will open an order with 0.1 lot!

### Trade Assistant GS

Time Terminal: 22:28:41

Buy profit: 0.00

Sell profit: 0.00

Pause Buy
Pause Sell

TP  
150

SL  
0

Close Buy
Close Sell

Open B
0.10
Open S

**EXAMPLES OF SIGNALS TRADING WITH TRADE ASSISTANT:**

Signals / MetaTrader 5 / [Best Combo Trade Assi and GS indi](#) ★★★★★ 0 reviews

Signals

- My Signals
- My Subscriptions
- Favorites
- Add widget
- Rules

Growth: 99 918.87%

Profit: 512 831.38 USD

Equity: 300 196.27 USD

Balance: 300 331.38 USD

Initial Deposit: 3 000.00 USD

Withdrawals: 215 500.00 USD

Deposits: 0.00 USD

Subscription not permitted

**Best Combo Trade Assi and GS indi**

Vasily Strukov

99 919%

RoboForex-Pro 1:2000

Maximum drawdown: 61.3%

Profit Trades: 78.7%

Max deposit load: 89%

Loss Trades: 21.3%

Trading activity: 100%

Account
Trading history
Statistics
Risks
Slippage
Reviews
What's new

Positions							
Symbol	Time	Type	Volume	Price	S/L	T/P	
Subscription not permitted							

★Subscription not permitted

1

week (since 2023)

0 USD

Equity	300 196.27 USD	
Profit	512 831.38 USD	
Initial Deposit	3 000.00 USD	
Withdrawals	215 500.00 USD	
Deposits	0.00 USD	

page
Reviews
What's new



### 3. SPECIAL OFFERS

#### a) Get all EA's for free!!



- Open an account with **RoboForex** (<https://roboforex.com/>), deposit a minimum of \$ 500 and get all EA's free: Use code " twds" when opening the account and contact me to get free EA's: @vstrukovEA or @ Dkmillion on telegram.
- Open an account with Weltrade (<https://www.weltrade.com/?r1=ipartner&r2=58077>), deposit a minimum of \$500 and get all EA's free!

## Open a Trading Account - RoboForex Ltd

Trading Account

Real Demo CopyFX Trader Contest

\* Trading platform: MetaTrader 5

\* Account Type: MT5 ProCent

\* Hedge system:  Yes  No

\* Currency: USD

\* Leverage: 1:1000

\* Password:

\* Confirm Password:

Affiliate code:

Confirm

Please enter affiliate code “twds” as in screen shot above

### **RoboForex cents accounts:**

mt5: minimum lot is 0.01

mt4: minimum lot is 0.1

### **b) Discount on a good and fast, reliable vps!!**



### **SPECIAL PROMOTION ON THE BEST AND FAST VPS! GET 5% DISCOUNT!**

\* To use an EA you need a VPS: Click on this link for Chocoping.com

(<https://chocoping.com/processing/aff.php?aff=567>)

When you open the account type in the discount code to get 5% off: CHAMP0001

**c) Cashback for rebates on spread!!**



We highly recommend that you use cashback for spread rebates - best choice:  
**Cashbackforex**

[https://www.cashbackforex.com/dashboard#aid\\_159482](https://www.cashbackforex.com/dashboard#aid_159482)

Use above link and link your account to get monthly cash from the spreads on all your trades!

**d) Buy one EA get one free!!**

You are welcome to have one free gift for every one EA you bought. Please send me the screen shot of your purchase. You will then qualify for your gift. Please let me know what other EA or indicator you want and send the following information (you can also use my telegram address here:

@vstrukovEA or @Dkmillion)

1. Send EA/Indicator you want
2. Send maximum of 2 metatrader account numbers so that I can code it for your account
3. Let me know if it must be coded in mt4 or mt5

**4. STOP LOSS**

We recommend that you use Equity Shield to protect your account.

**Available here:** <https://www.mql5.com/en/market/product/86312?source=Site+Profile+Seller>

**Links to manual is here:**

[https://orange forex.ru/?page\\_id=273](https://orange forex.ru/?page_id=273)

**Risk Warning:**

*Trading Forex involves significant risk and can result in the loss of your invested capital. You should not invest more than you can afford to lose and should ensure that you fully understand the risks involved. Trading leveraged products may not be suitable for all investors. Before trading, please take into consideration your level of experience, investment objectives and seek independent financial advice if necessary.*

*Make sure that you fully understand the risks before you make any trading decisions.*

